



ICMJ

**AUSTRALIAN INTERCOLLEGIATE
MEAT JUDGING ASSOCIATION**

LAMB

Retail Cuts

Lamb - Leg chop



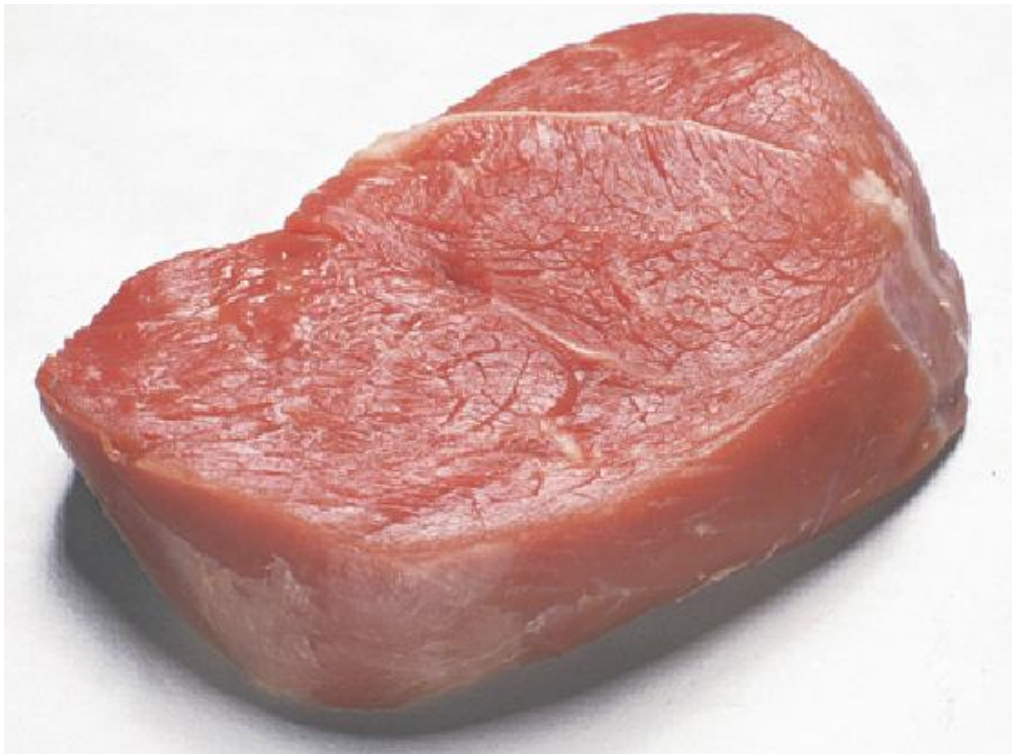
Lamb - Chump chop



Lamb - Round roast



Lamb - Round steak



Lamb - Topside roast



Lamb - Topside steak



Lamb - Shank



Lamb - Midloin chop



Lamb - Ribloin cutlet



Lamb - Forequarter chop



Lamb - Eye of loin



Lamb - Butterfly steak



Lamb - Tenderloin



Lmab - Best neck chop



Lamb - Frenched rack



Lamb – Rack



Lamb – Rump steak



Lamb – Leg roast



Lamb – Ribs (portioned or whole)



Lamb – Rump steak



(Photo credit

https://cdn.shopify.com/s/files/1/1244/7556/products/Lamb_Rmp_Stk_grande.jpg?v=1465266580)

Lamb – Rump roast



(Photo credit <http://www.mulwarra.com.au/products/mulwarra-export-lamb/>)

Lamb – Neck chop



(Photo credit https://mallonthemove.co.za/wp-content/uploads/2017/06/lamb_neck_chops.jpg)

